

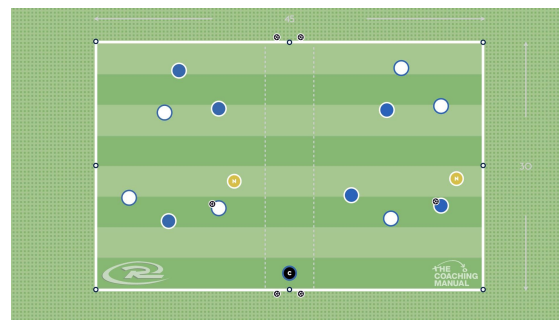
Bantam Division: Passing Through a 3v3 + 1 Neutral (Or 2) Keep Away

Written by Rush Soccer

15 mins 14 players 8 balls 14 bibs 8 cones
 30 x 45 total area

GAME PHASE & COLLECTIVE ACTION

ATTACKING, PROGRESS: Possession to Progress. Unbalance disorganize opponent to advance the ball forward with distinct advantage.



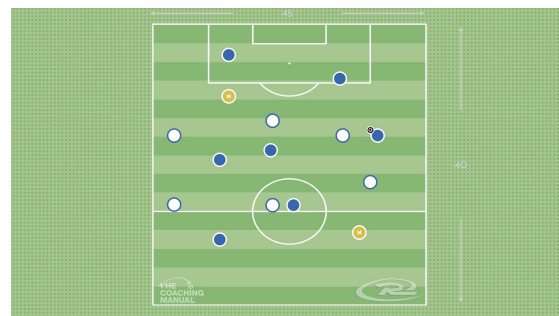
Bantam Division: Passing Through a 6v6 + 2N Keep Away

Written by Rush Soccer

15 mins 14 players 8 balls 14 bibs 8 cones
 45 x 40 total area

RUSH WAY

Application of the eight principles of the Rush Blue Thread. Player Acknowledgement and Greetings are expected. Style Of Play (attack oriented). Formation: 2-3-1 to ease transition onto 2-4-2 and then 3-5-2. Player Position (players experience different positions)



Bantam Division: Passing In A 7v7 Scrimmage

Written by Rush Soccer

30 mins 14 players 8 balls 14 bibs 8 cones
 Full 7v7 Pitch (60 x 40 approx.) area

RUSH WAY

Application of the eight principles of the Rush Blue Thread. Player Acknowledgement and Greetings are expected. Style Of Play (attack oriented). Formation: 2-3-1 to ease transition onto 2-4-2 and then 3-5-2. Player Position (players experience different positions)

